

QHB型潜水回流泵

QHB type submersible reflux pump

产品使用范围 /PRODUCT USAGE SCOPE

QHB型系列潜水回流泵是在潜水搅拌机生产技术基础上开发出的产品，该泵为污水处理厂二级混合液回流、反硝化脱氮除氮的专用设备，并可用于地面给排水工程中需要微扬程、大流量场所。

The QHB series submersible reflux pump is a product developed based on the production technology of submersible mixers. This pump is a specialized equipment for secondary mixed liquid reflux, denitrification and nitrogen removal in sewage treatment plants, and can be used in ground water supply and drainage engineering where micro head and high flow are required.

产品型号说明 /PRODUCT MODEL DESCRIPTION

QHB A 10

电机额定功率KW Rated power of motor KW
A为节能型 A is energy-saving type
潜水回流泵 Submersible reflux pump



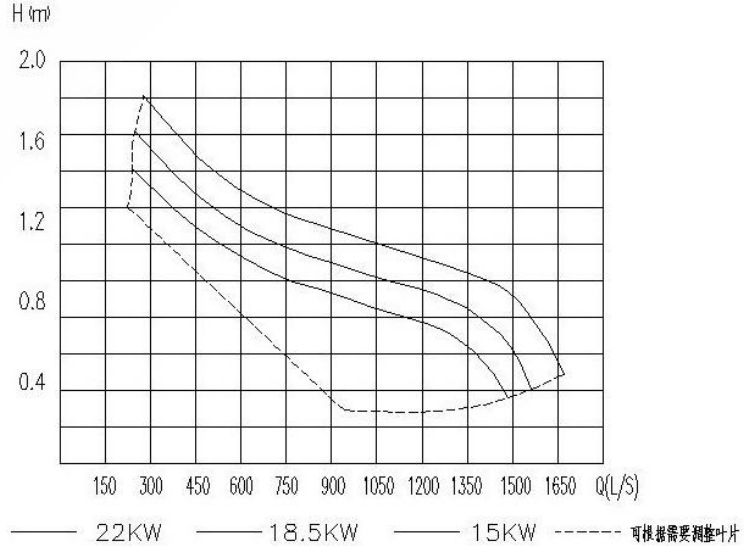
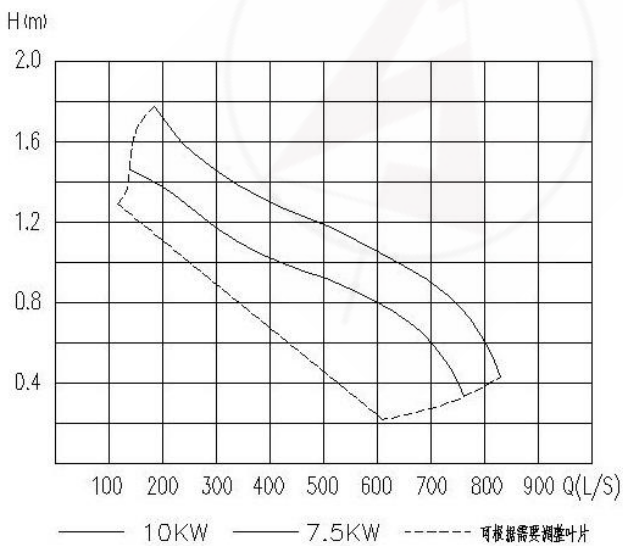
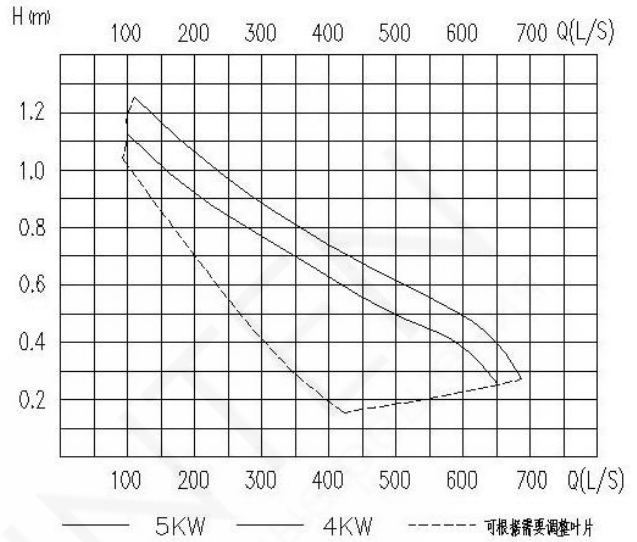
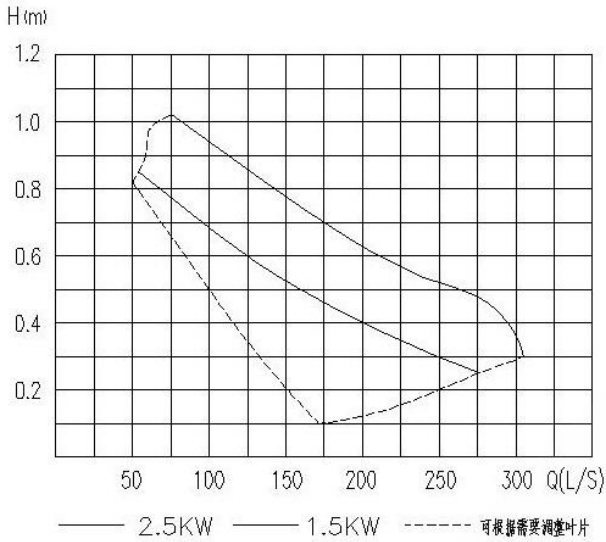
产品技术性能表/PRODUCT TECHNICAL PERFORMANCE TABLE

型号 model	电机功率 power (Kw)	额定电流 Rated current (A)		叶轮直径 impeller diameter (mm)	防护等级 protection grade	绝缘等级 Insulation level	公称直径 Nominal diameter (mm)
		QHB	QHBA				
QHB1.5	1.5	5.2	3.7	400	IP68	F	400
QHB2.5	2.5	7	5.6	400	IP68	F	400
QHB4	4	14	8.6	620	IP68	F	600
QHB5	5	19	11	620	IP68	F	600
QHB7.5	7.5	28	15	620	IP68	F	600
QHB10	10	32	22	620	IP68	F	600
QHB15	15	30	30	760	IP68	F	740
QHB18.5	18.5	41	36	760	IP68	F	740
QHB22	22	44.7	42	760	IP68	F	740

性能曲线/PERFORMANCE CURVE

此曲线为泵的特性曲线，不包括扩散管和进出口的损失。

This curve is the characteristic curve of the pump, excluding the losses of the diffuser and inlet and outlet.



产品安装/PRODUCT INSTALLATION



特别提醒用户：正确安装使用是该泵长久、正常运转的基本保证。潜水回流泵采用自动耦合安装系统，在无需排水的情况下，不用任何机械拆卸便可迅速提升，安装方便快捷。本设备除穿墙管需预埋外，导杆、起吊杆均用膨胀螺栓与池体连接，不需预埋件。预埋件和拍门由用户自行购买安装，回流泵有水平安装和垂直安装两种方式供用户选择。

Special reminder to users: Proper installation and use are the basic guarantees for the long-term and normal operation of this pump. The submersible reflux pump adopts an automatic coupling installation system, which can be quickly lifted without any mechanical disassembly without the need for drainage, making installation convenient and fast. This equipment requires pre embedded wall pipes and guide rods. The lifting rods are connected to the pool body with expansion bolts and do not require embedded parts. The embedded parts and doors are purchased and installed by the user themselves, and the reflux pump can be installed horizontally or vertically for the user to choose from.

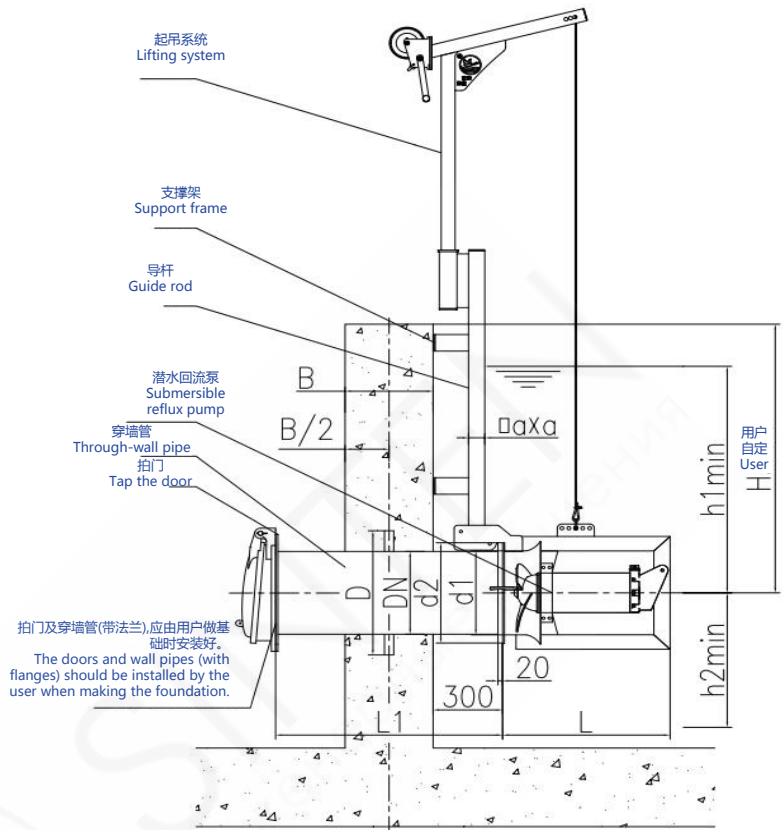
安装尺寸/INSTALLATION SIZE

型号T model T 参数P parameter P	d1	d2	D	DN	L	h1	h2	a	B	L1
QHB1.5	406	480	600	400	620	750	350	70	≥380	由用户 确定 Deter- mined by the user
QHB2.5	406	480	600	400	620	750	350	70		
QHB4	632	710	800	600	840	1200	550	100	≥450	
QHB5	632	710	800	600	840	1200	550	100		
QHB7.5	632	710	800	600	920	1200	550	100		
QHB10	632	710	800	600	920	1200	550	100		
QHB15	832	890	980	800	1080	1300	600	100	≥480	
QHB18.5	832	890	980	800	1260	1300	600	100		
QHB22	832	890	980	800	1380	1300	600	100		

产品特点/PRODUCT FEATURES

1. 按照微扬程、大流量的工作模式特别设计
2. 主机采用冲压成型结构，水力性能好效率高
3. 一体化吊装设计。可实现在水下快速安装
4. 采用双重机械密封和多重电机保护功能，提高运行可靠性。

1. Specially designed according to the working mode of micro head and high flow rate
2. The host adopts a stamped structure with good hydraulic performance and high efficiency
3. Integrated lifting design. Can achieve rapid installation underwater
4. Adopting dual mechanical seals and multiple motor protection functions to improve operational reliability.



产品使用条件/PRODUCT USAGE CONDITIONS

01	连续运行时，介质温度不高于 During continuous operation, the temperature of the medium should not exceed	40°C
02	介质的PH值 PH value of the medium	5~9
03	最大潜没深度 Maximum submergence depth	10m

